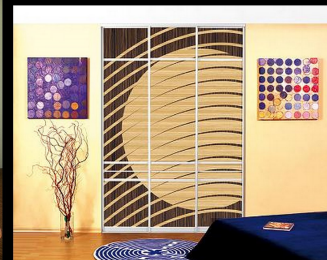




presents

# Sliding doors pricelist







**Netto price from:**  
(per 1 door, high 2500, width 800mm)

**117 euros**

**Door filling: painted glass** (4 standart colors+any over color from RAL palette).  
Max niche high 2600mm., max one door width 1600 mm.



**Netto price from:**  
(per 1 door, high 2500, width 800mm)

**86 euros**

**Door filling: laminated chipboard** (32 standart colors+ Egger, Pfleiderer, Cleaf, Thermopal and Wodego laminated chipboard palettes).  
Max niche high 2750mm., max one door width 2000mm.



**Netto price from:**  
(per 1 door, high 2500, width 800mm)

**136 euros**

**Door filling: Rattan board** (21 standart color).  
Max niche high 2700mm., max one door width 900mm.



**Door filling: frosted glass**

Max niche high 2600 mm., max one door width 1600 mm.

---

**Netto price from:**  
(per 1 door, high 2500, width 800mm)

**138 euros**



**Door filling: silver or dark brown mirror**

Max niche high 2700 mm., max one door width 1600 mm.

---

**Netto price from:**  
(per 1 door, high 2500, width 800mm)

**95 euros**



**Door filling: laminated glass (selection from more than 1000 pictures, own pictures are wellcome)**

Max niche high 2700 mm., max one door width 1600 mm.

---

**Netto price from:**  
(per 1 door, high 2500, width 800mm)

**248 euros**



# Rattan palette



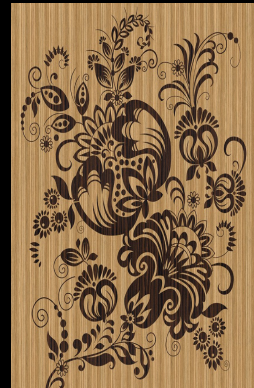
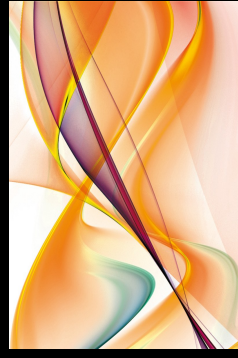
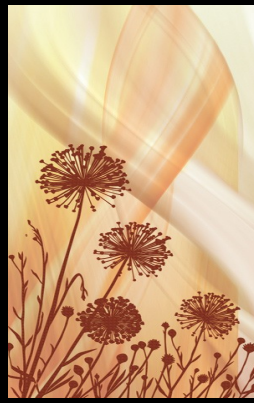
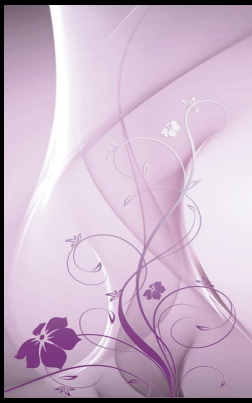
## Laminated chipboard (standart colors)

Surfaces: PR-rustic pores; SE-ash structure; SM-smooth; BS-office structure; PE-pearl like (orange peel)





Laminated glass (few samples from more than 1000 pictures)

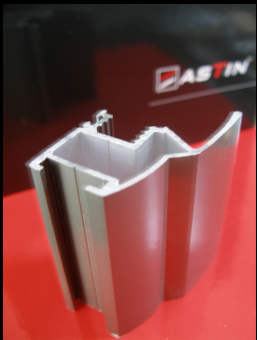




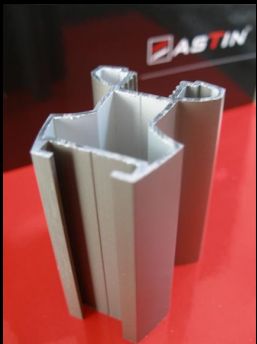
We want to introduce you to our aluminium ASTIN and JOKER system, also to SOGAL steel system. 11 different handles (6 Astin, 3 Joker, 2 Sogal) and 15 various colors allows to decorate any home space. Modern and convenient form of the profiles gives to each door a unique charm and attractiveness. The system allows you to produce sliding, pull-apart, folding and even pivot doors. Profiles is used with 4-18 mm. thickness fillers. Combining different materials, the door is divided according to the required design (diagonally, horizontally, vertically, or even custom winding angle). Market news is polished aluminium profiles Prestige and Elite. Polished surface has a unique image and impeccable quality. Prestige and Elite system has no analogues. For door mechanism we give a 10-year guarantee.



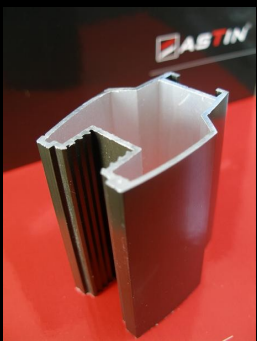
**NEW HEROS** – aluminium profile with stud aluminium tape and amortization brush, which covers all of the holes made during door manufacturing proces. Used with 4-10 mm. thickness door fillers (chipboard, glass products, rattan, etc.). There are 4 matt anodized shades (silver, gold, light brown and dark brown). Recommended door height is up to 2700mm. (if with supplementary agreement, door can be made up to 3500 mm. height), width up to 1500mm.



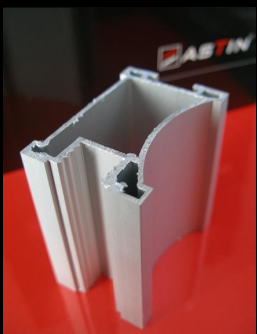
**PRESTIGE** – in 2008 presented new aluminium profile, which has polished surface. Every surface has 4 shades (silver, gold, light brown and dark brown). Polished profile has a glossy surface and is scratch resistant. Profile is with stud aluminium tape and amortization brush, which covers all the holes made during door manufacturing proces. Used with 4-10 mm. thickness door fillers (chipboard, glass products, rattan, etc.). Recommended door height is up to 2700mm. (if with supplementary agreement, door can be made up to 3500 mm. height), width up to 1500mm.



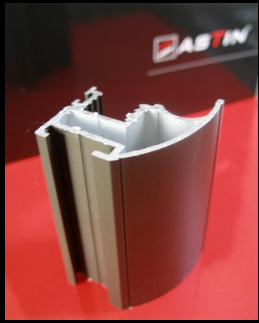
**TWINS** - modern and unique aluminium profile with stud aluminium tape and amortization brush, which covers all of the holes made during door manufacturing proces. Used with 4-10 mm. thickness door fillers (chipboard, glass products, rattan, etc.). There are 4 matt anodized shades (silver, gold, light brown and dark brown). Recommended door height is up to 2700mm. (if with supplementary agreement, door can be made up to 3500 mm. height), width up to 1500mm.



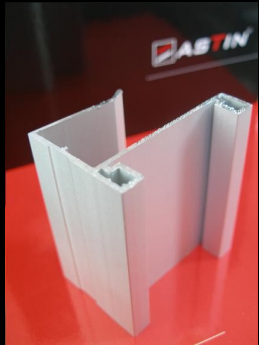
**ELITE** - in 2008 presented new aluminium profile, which has polished surface. Every surface has 4 shades (silver, gold, light brown and dark brown). Polished profile has a glossy surface and is scratch resistant. Profile is with stud aluminium tape and amortization brush, which covers all of the holes made during door manufacturing proces. Used with 4-10 mm. thickness door fillers (chipboard, glass products, rattan, etc.). Recommended door height is up to 2700mm. (if with supplementary agreement, door can be made up to 3500 mm. height), width up to 1500mm.



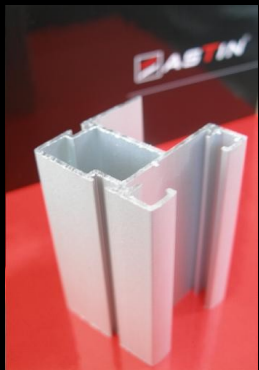
**TOWER** – aluminium profile with stud aluminium tape and amortization brush, which covers all of the holes made during door manufacturing proces. Used with 4-10 mm. thickness door fillers (chipboard, glass products, rattan, etc.). There are 4 matt anodized shades (silver, gold, light brown and dark brown). The front part of the profile has the opportunity to be covered with a decorative film (wood imitation, etc.), which provides a unique charm to sliding door and is easy adaptable to the room interior. Recommended door height is up to 2700mm. (if with supplementary agreement, door can be made up to 3500 mm. height), width up to 1500mm.



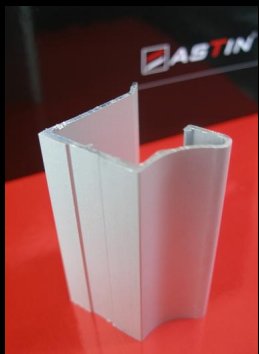
**IDEA** - aluminium profile with stud aluminium tape and amortization brush, which covers all of the holes made during door manufacturing proces. Used with 4-10 mm. thickness door fillers (chipboard, glass products, rattan, etc.). There are 4 matt anodized shades (silver, gold, light brown and dark brown). The front part of the profile has the opportunity to be covered with a decorative film (wood imitation, etc.), which provides a unique charm to sliding door and is easy adaptable to the room interior. Recommended door height is up to 2700mm. (if with supplementary agreement, door can be made up to 3500 mm. height), width up to 1500mm.



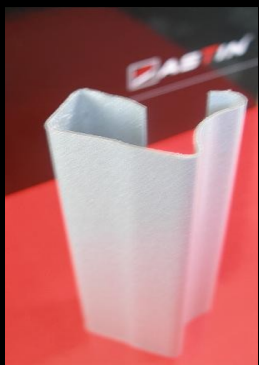
**ORIENT** - aluminium profile is used with 16-18 mm. thickness door fillers (except glass products), has adhesive amortization brush, with only one matt anodized shade (silver). Recommended door height is up to 2700mm., width up to 900mm. The front edge of the profile can be assessed by 1mm. thickness wood imitation PVC or HPL, which provides a unique charm to sliding door and is easy adaptable to the room interior.



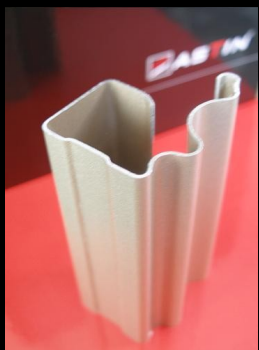
**ELEGANT** - aluminium profile is used with 16-18 mm. thickness door fillers (except glass products), has adhesive amortization brush, with only one matt anodized shade (silver). Recommended door height is up to 2700mm., width up to 900mm. The front edge of the profile can be assessed by 1mm. thickness wood imitation PVC or HPL, which provides a unique charm to sliding door and is easy adaptable to the room interior.



**FIONA** – minimalist and narrow aluminum profile is used with 16-18 mm. thickness door fillers (except glass products), has adhesive amortization brush, with only one matt anodized shade (silver). Recommended door height is up to 2700mm., width up to 900mm.



**C1** - a narrow steel profiles for those who appreciate the simplicity. Brushes are glued. Has 11 different shades (4 painted: black, white, silver and light brown, and 7 covered with resistant wood imitation film: oak, beech, maple, redwood, dark nut, Calvados (pear), and cherry). The maximum possible height of the doors is up to 2800mm., width up to 1300mm. Used with 4-10 mm. thickness door fillers (chipboard, glass products, rattan, etc.).



**C2** – wide and unique design steel profile with adhesive brush. Used with 4-10 mm. thickness door fillers (chipboard, glass products, rattan, etc.). Brushes are glued. Has 11 different shades (4 painted: black, white, silver and light brown, and 7 covered with resistant wood imitation film: oak, beech, maple, redwood, dark nut, Calvados (pear), and cherry). The maximum possible height of the doors is up to 2800mm., width up to 1300mm. Used with 4-10 mm. thickness door fillers (chipboard, glass products, rattan, etc.).